

State of Wyoming Corner Record

(In compliance with the *CORNER PERPETUATION AND FILING ACT*, Wyoming Statutes, 1997, Section 33-29-140, et seq., and the Rules and Regulations of the Board of Registration for Professional Engineers and Professional Land Surveyors)

Reverse side of this form may be used if more space is needed.

Record of original survey and citation of source of historical information (if corner is lost or obliterated). Description of corner monumentation evidence found and/or monument and accessories established to perpetuate the location of this corner. Sketch of relative location of monument, accessories, and reference points with course and distance to adjacent corner(s) (if determined in this survey). Method and rationale for reestablishment of lost or obliterated corner.

Section Corner: 21/22/27/28 T16N, R66W, 6th PM, Laramie County, Wyoming
 GLO record: 18"x12"x8" Granite boulder
 Found: Well marked stone in north-south fenceline.
 Set: 30" No.5 rebar w/2 1/2" dia. Aluminum Survey Cap, PLS 4828; with ring of stones.

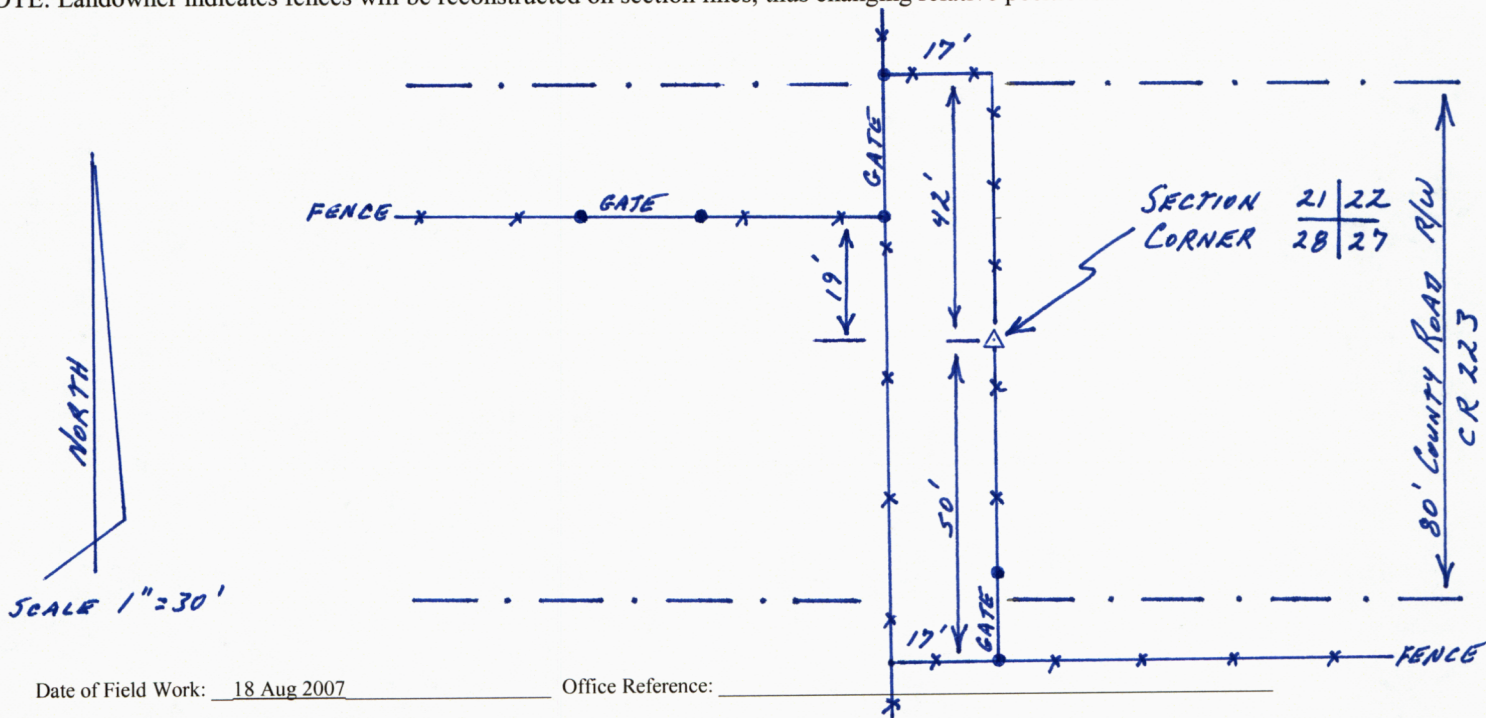


Looking northwesterly.



Found stone, set monument & ring of stones.

NOTE: County Road 223 (originally CR 135) established 31 Dec. 1923, Journal page J-6 with an 80' R/W.
 NOTE: Landowner indicates fences will be reconstructed on section lines, thus changing relative positions as shown hereon.



Date of Field Work: 18 Aug 2007 Office Reference: _____

CROSS INDEX DIAGRAM

1	2	3	4	5	6	7	8	9	10	11	12	13	14	15	16	17	18	19	20	21	22	23	24	25	
A																									A
B																									B
C	6		5		4		3		2		1														C
D																									D
E																									E
F																									F
G	7		8		9		10		11		12														G
H																									H
J																									J
K																									K
L	18		17		16		15		14		13														L
M																									M
N																									N
O																									O
P	19		20		21		22		23		24														P
Q																									Q
R																									R
S																									S
T	30		29		28		27		26		25														T
U																									U
V																									V
W																									W
X	31		32		33		34		35		36														X
Y																									Y
Z																									Z

Land Surveyor / Firm / Address

Studley Land Surveying, PC

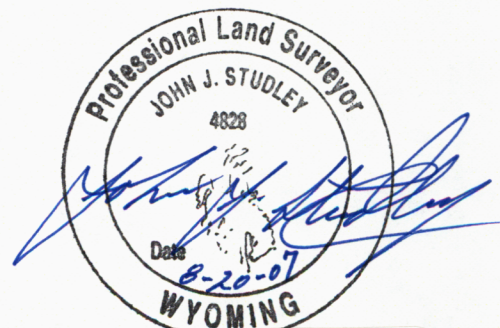
John J. Studley, PLS No. 4828

5805 E. 13th St.

Cheyenne, WY 82001

Telephone: 307-287-4755

This corner record was prepared by me or under my direction and supervision.
 SEAL & SIGNATURE



RECORDED 8/21/2007 AT 8:34 AM REC# 482026 BK# 2022 PG# 3
 DEBRA K. LATHROP, CLERK OF LARAMIE COUNTY, WY PAGE 1 OF 1

Corner Name: Section Corner common to Sections: 21, 22, 27 & 28 T 16 N R 66 W ; 6th P.M. Cross-Index No.: R13
 SBRPEPLS/PLSW: March 1994; PLSW January 1998